

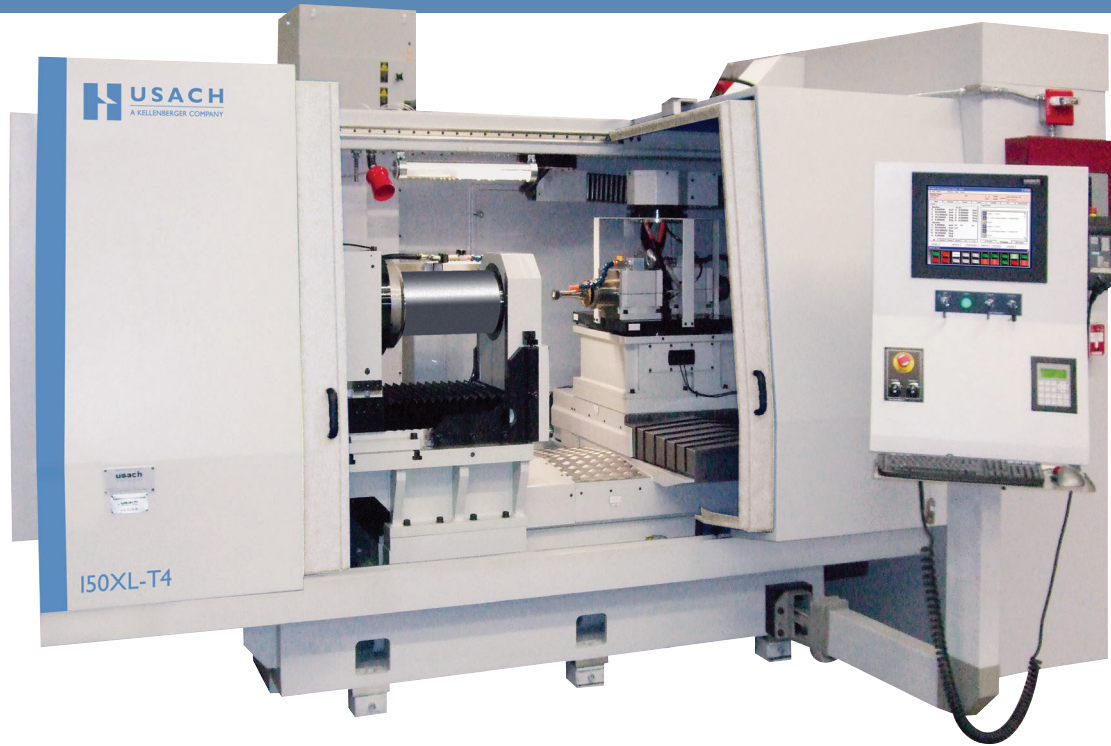
USACH

ID/OD GRINDING MACHINES

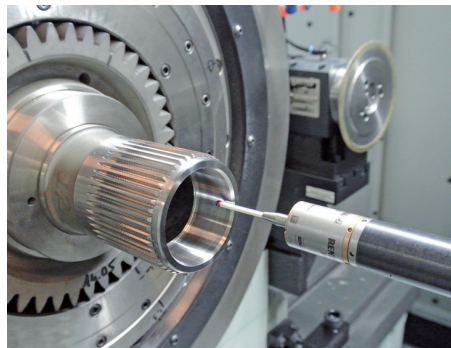


USACH

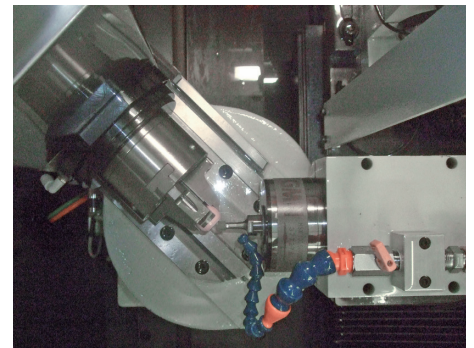
ID/OD GRINDING SYSTEMS



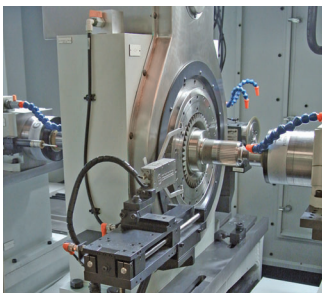
Turret
Fully programmable multi-spindle turret



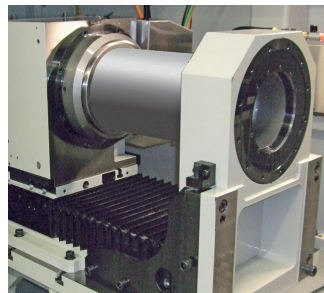
Gaging and Probing
In-process/Post-process Active and passive length positioning Size and location probing



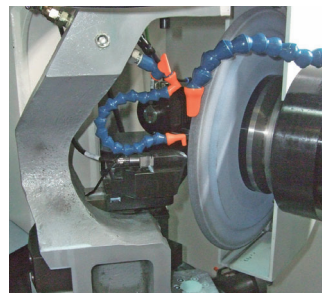
B-Axis
CNC workhead continuous swivel axis with high precision rotary encoder +/- 95°



Center Drive System
Simultaneous grinding from the left and right side of the workpiece



Customer Specific Clamping Solutions
Example: Axial clamping system



Dressers
Single point, diamond disk, roll, radius ID/OD

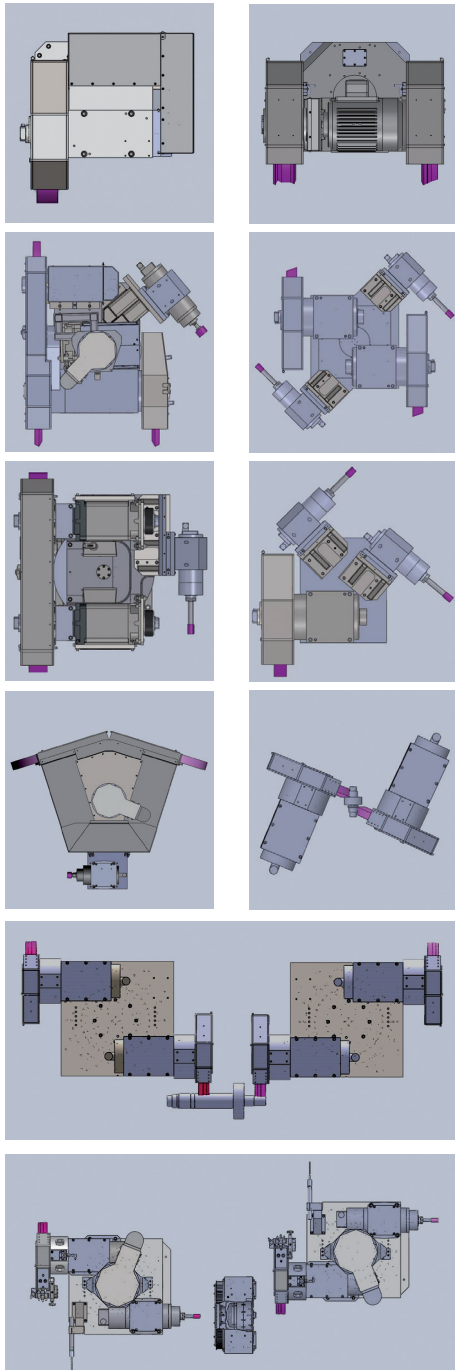


Automation
Integrated 7 axes robot, post-process gaging and part conveying system

MACHINE CONSTRUCTION

SINGLE WHEELHEAD, TURRET CONFIGURATIONS AND SPECIAL SOLUTIONS

Whether the solution requires a single wheelhead, multiple wheelheads (OD and ID) on a turret or simultaneous grinding, we have the solution.

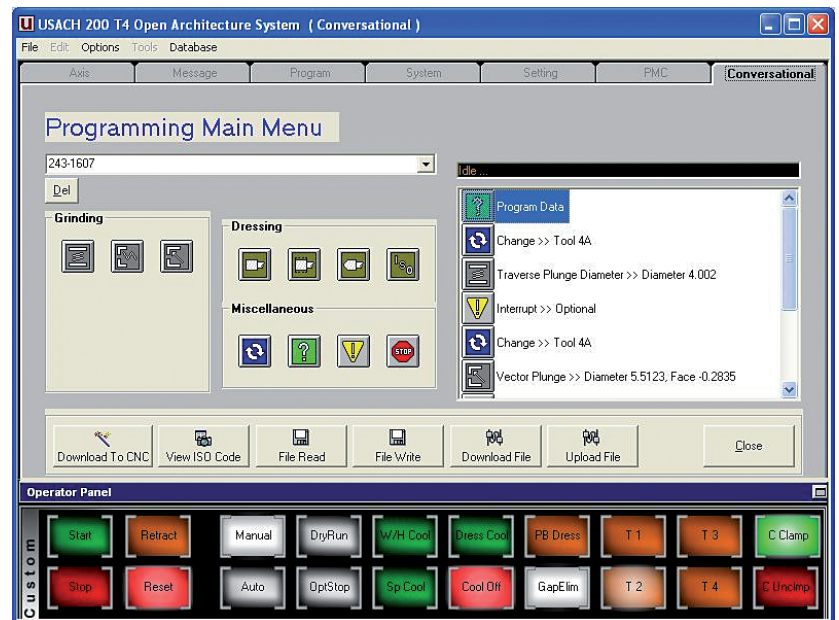


CONTROL SYSTEM

Siemens or Fanuc



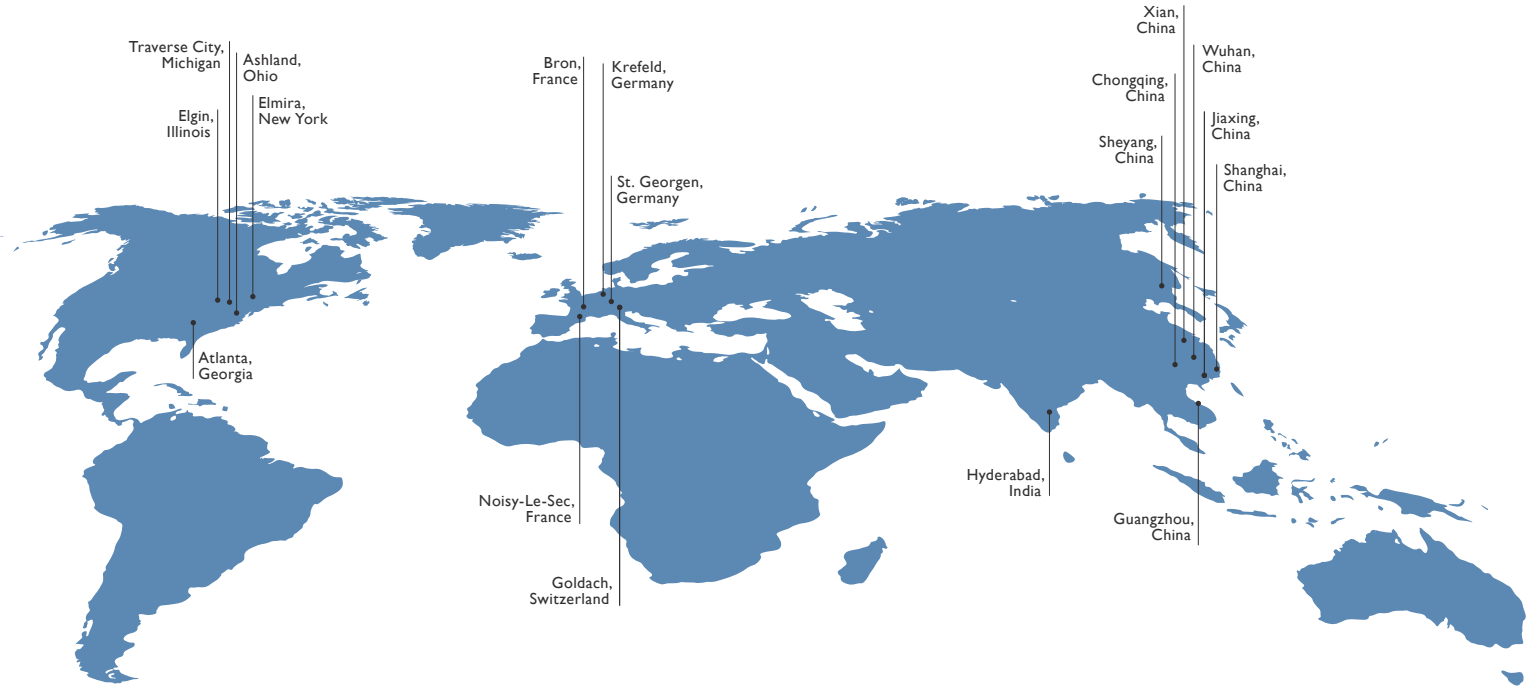
USACH OPEN ARCHITECTURE SYSTEM PROGRAMMING SOFTWARE



TECHNICAL DETAILS

	100	150	200
Max swing diameter	450 mm (17.71")	610 mm (24")	812 mm (32.00")
Max part length	255 mm (10")	1020 mm (40")	1400 mm (55")
Max workpiece weight	272 kg (500 lbs.)	454 kg (1000 lbs.)	725 kg (1600 lbs.)
X axis stroke	500 mm (19.68")	400 mm (15.75")	600 mm (23.62")
Z axis stroke	300 mm (11.80")	500 mm (19.68")	600 mm (23.62")

HARDINGE WORLDWIDE



Hardinge is a leading international provider of advanced metal-cutting solutions. We provide a full spectrum of highly reliable CNC turning, grinding, and honing machines as well as technologically advanced workholding accessories.

The diverse products we offer enable us to support a variety of market applications in industries including aerospace, agricultural, automotive, construction, consumer products, defense, energy, medical, technology, transportation and more.

We've developed a strong global presence with manufacturing operations in North America, Europe, and Asia. Hardinge applies its engineering and applications expertise to provide your company with the right machine tool solution and support every time.

AMERICAS

GEORGIA
Hardinge Corporate
79 W Paces Ferry Rd, 2F
Atlanta, GA 30305
P. 800.843.8801

ILLINOIS
Hardinge
1755 Britannia Dr
Unit 1A
Elgin, IL 60124

MICHIGAN
Forkardt
2155 Traversefield Dr
Traverse City, MI 49686
P. 800.544.3823
E. tcsales@forkardt.com

NEW YORK
Hardinge
1 Hardinge Drive
Elmira, NY 14903
P. 800.843.8801
E. info@hardinge.com

OHIO
Ohio Tool Works
1374 Enterprise Parkway (TR 743)
Ashland, OH 44805
P. 419.281.3700
E. sales@ohiotoolworks.com

EUROPE

SWITZERLAND
Hardinge Kellenberger AG
Thannäckerstrasse 22
CH-9403 Goldach
P. 41 71 2429111
E. info@kellenberger.net

GERMANY
Hardinge GmbH
Fichtenhain A 13c
47807 Krefeld
P. 49 2151 49649 10
E. info@hardinge-gmbh.de

J.G. Weisser Söhne GmbH
Johann-Georg-Weisser-Straße 1
78112 St. Georgen
P. +49 7724 881-0
E. info@weisser-web.com

FRANCE
Jones & Shipman SARL
8 Allee des Ginkgos
BP 112-69672
Bron Cedex, France

ASIA

CHINA
Hardinge Machine
(Shanghai) Co. Ltd.
1388 East Kangqiao Road
Pudong, Shanghai 201319
P. 0086 21 3810 8686